



OORJAA[®]
LIVE LIGHTLY

LANTANA



INDEX

About the artist	3
Design process & philosophy	4
Materials	5
How to Order	6
Pendant Lights	7
Floor Lights	12
Table Lights	14
Like A River Flow	18
Lantana Elephants	19
Living Forest	20
Care Instructions	21



ABOUT THE ARTIST

Jenny Pinto

Jenny Pinto is a handmade papermaker based in Bangalore, India. Her studio in Bellandur was one of Bangalore's first green buildings.

Jenny was an ad film director in Bombay for 20 years before she decided to move to Bangalore to explore hand craft. Handmade paper was what she chose to pursue after a chance meeting with a papermaker and she hasn't looked back since. She worked with a papermaker in the US and returned to set up her studio in 1998, from where she has been exploring various fibres and the nuances of paper for the purpose of lighting.

Her designs are really about how shadow plays with light. Textured and sculpted for drama, whether the light is on or not, her lights add a lot of warmth and depth to a space. Inspired by natural and urban landscape, the designs are artisanal, contemporary, subtle yet dramatic and green.



Paper can be made from the fibres of most plants but some plants have the properties to make very strong and durable paper. After all, well preserved manuscripts, paintings and books have lasted centuries.

While most handmade paper in India is made from the fibres of cotton hosiery, jute and bagasse (sugarcane waste) , the paper in Oorjaa is made from banana fibre and lokta (mulberry family) because they are very strong. However, strong fibres require a different process and take a longer time to make.

The paper making process used is the traditional one, using no harsh chemicals, hand-lifting the sheets and drying it naturally which gives the paper extra strength. Jenny has developed a unique process to make really translucent paper that is ideal for lighting. Each sheet takes about four days to make and the resulting paper is strong enough to texture and sculpt. Since the entire process is in-house, her studio has probably done with paper what no one else in the country has.

MATERIAL SWATCHES AND CODES

Variations in colour and texture are intrinsic to our paper and lights because they are handcrafted and part of the aesthetics



Banana Fibre Paper

(BP)



Crushed Banana
Fibre Paper


(CB)



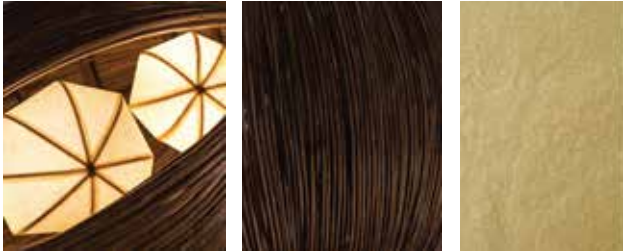
Lantana

HOW TO ORDER

Each product has a unique code. The following example shows how to order the product you need.




Use the swatches to choose the material.



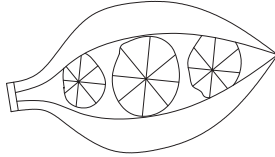
Lantana
Banana Fibre Paper (BP)

Peas in A Pod Table Lamp



Material
MS frame with powder coating, handcrafted using lantana and banana fibre paper.

Size




30 cm W
61cm H

Use the drawings to select the size.

Order Code
JPSP1862

Choose the codes from the list and place the order.



Provided with
LED G4 3W
Warm White

Inclusive of LED

For example, to order Seed Pod Table Lamp in **30 CM X 61CM** size, the code would be **JPSP1862**.



PENDANT LIGHTS



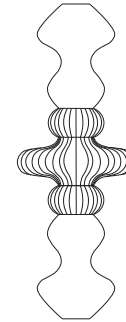
GAIA Pillar Pendant Lamp



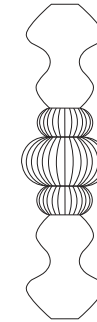
Material

MS frame with powder coating, handcrafted using lantana and banana fibre paper.

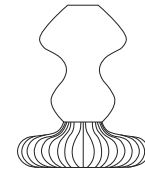
Sizes



61 cm W
183 cm H



61 cm W
183 cm H



61 cm W
91.5 cm H

Order Code

JPSP1856

JPSP1857

JPSP1860



Lantana



Banana Fibre
Paper (BP)

Inclusive of LED



Provided with
LED Strip 10-15 W
Warm White



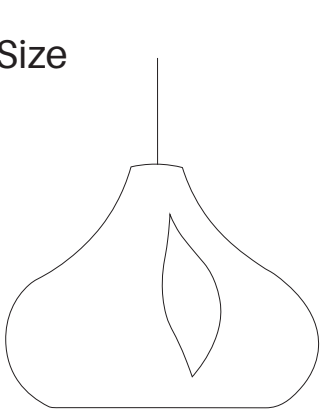
Summer Rain Pendant Lamp



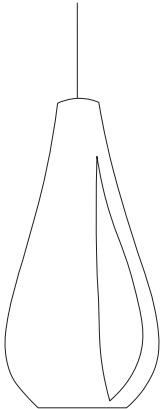
Material

Handcrafted with lantana

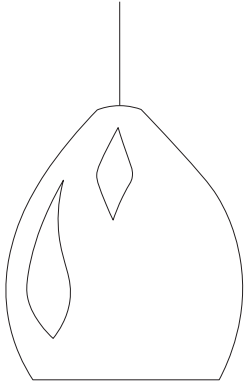
Size



103 cm W
91.5 cm H



103 cm W
91.5 cm H



103 cm W
91.5 cm H

Order Code

JPSP1864

JPSP1926

JPSP1927



Lantana

Inclusive of LED



Provided with
E 27 Filament Bulb - 4 W
Warm White



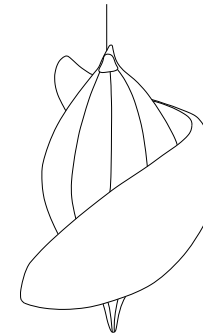
Swirl Pod Pendant Lamp



Material

MS frame with powder coating, handcrafted using lantana and banana fibre paper.

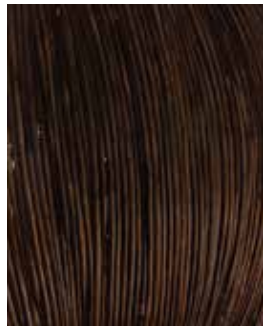
Size



72.5 cm W
91.5 cm H

Order Code

JPSP1863



Lantana



Banana Fibre
Paper (BP)

Inclusive of LED



Provided with
LED Strip 5-10 W
Warm White



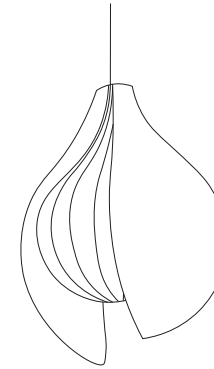
Cotton Pod Pendant Lamp



Material

MS frame with powder coating, handcrafted using lantana and banana fibre paper.

Size



72.5 cm W
91.5 cm H

Order Code

JPSP1866



Lantana



Banana Fibre
Paper (BP)

Inclusive of LED



Provided with
LED Strip 5-10 W
Warm White



FLOOR LIGHTS



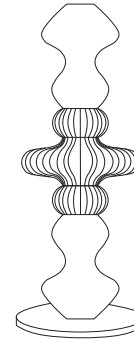
GAIA Pillar Floor Lamp



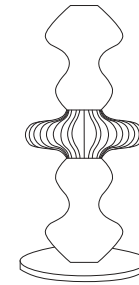
Material

MS frame with powder coating, handcrafted using lantana and banana fibre paper.

Sizes



61 cm W
274 cm H



61 cm W
213 cm H

Order Code

JPSP1872



Lantana



Banana Fibre
Paper (BP)

Inclusive of LED



Provided with
LED Strip 10-15 W
Warm White



TABLE LIGHTS



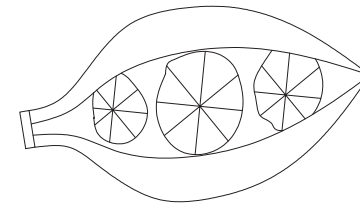
Peas in A Pod Table Lamp



Material

MS frame with powder coating, handcrafted using lantana and banana fibre paper.

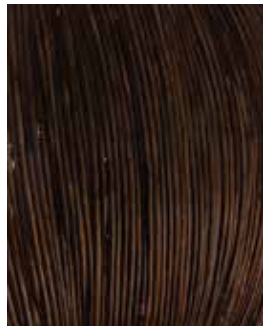
Size



30 cm W
61cm H

Order Code

JPSP1862



Lantana



Banana Fibre
Paper (BP)

Inclusive of LED



Provided with
LED G4 3W
Warm White



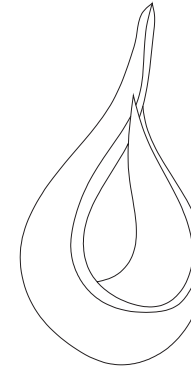
Dew Drop Table Lamp



Material

MS frame with powder coating, handcrafted using lantana and banana fibre paper.

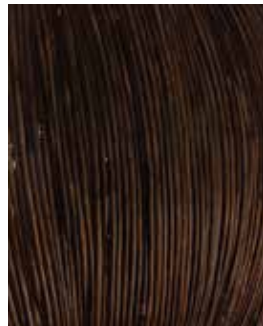
Size



46 cm W
61cm H

Order Code

JPSP1861



Lantana

Banana Fibre
Paper (BP)

Inclusive of LED



Provided with
LED Strip 5-10 W
Warm White



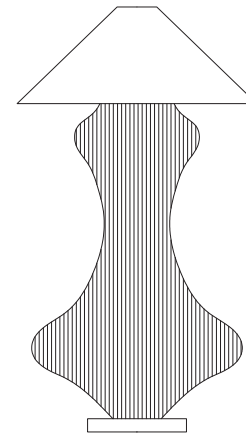
Gajagamini Table Lamp



Material

Handcrafted with lantana.

Size



70 cm W
100 cm H

Order Code

JPSP1915



Lantana

Inclusive of LED



Provided with
LED E27 7-9 W
Warm White

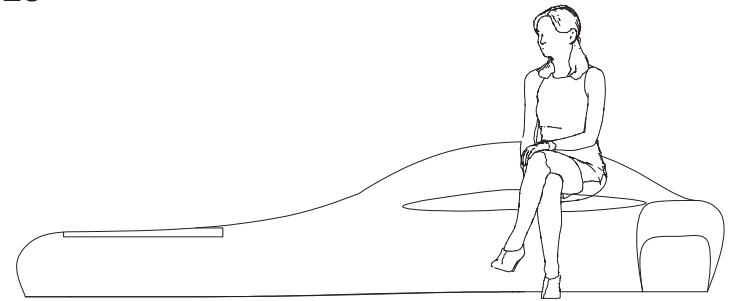


Like A River Flow

Material

MS frame with powder coating, handcrafted using lantana and banana wooden top and granite stone.

Size



295 cm L
110 cm W
45 cm H

Order Code

JPSP1867



Lantana

Granite Stone

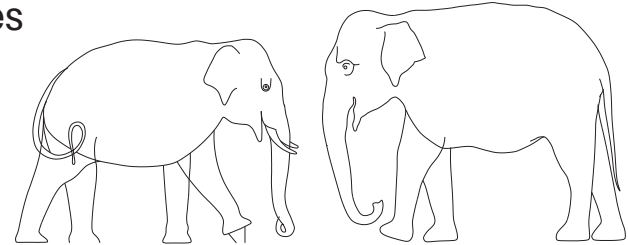


Lantana Elephants

Material

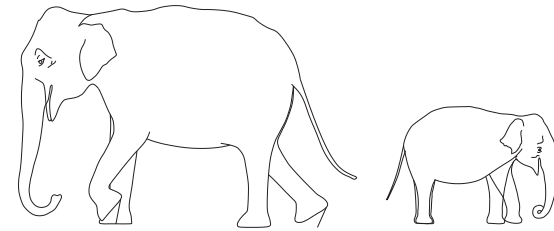
Handcrafted with lantana.

Sizes



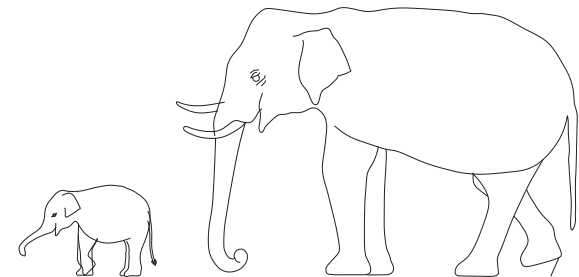
330 cm L
130 cm W
220 cm H

357 cm L
122 cm W
256 cm H



384 cm L
165 cm W
248 cm H

186 cm L
73 cm W
129 cm H



161 cm L
57 cm W
100 cm H

428 cm L
188 cm W
297 cm H



Lantana

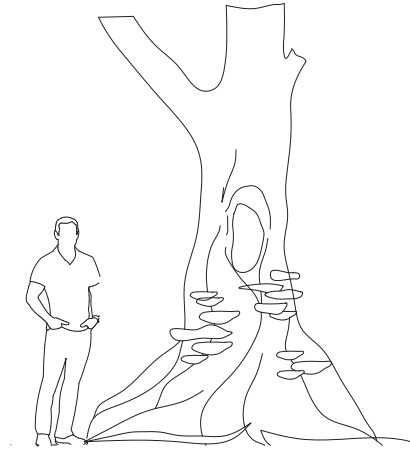


Living Forest

Material

Handcrafted using lantana and crushed banana fibre paper.

Size



61 cm W (Top)
152 cm W (Bottom)
366 cm H

Order Code

JPSP1854



Crushed Banana
Paper (CB)

Lantana

Inclusive of LED



Provided with
LED Dimmable - G5 5W
PCB Sensor Module

CARE INSTRUCTIONS

Dust regularly with a clean,
dry or moist cloth.

Avoid prolonged exposure to direct
sunlight to prevent discolouring.

Avoid exposure to excessive
moisture and rain but if it does get
wet, just leave it to dry naturally.

For any queries, please contact
pratyaksh@oorjaa.in

