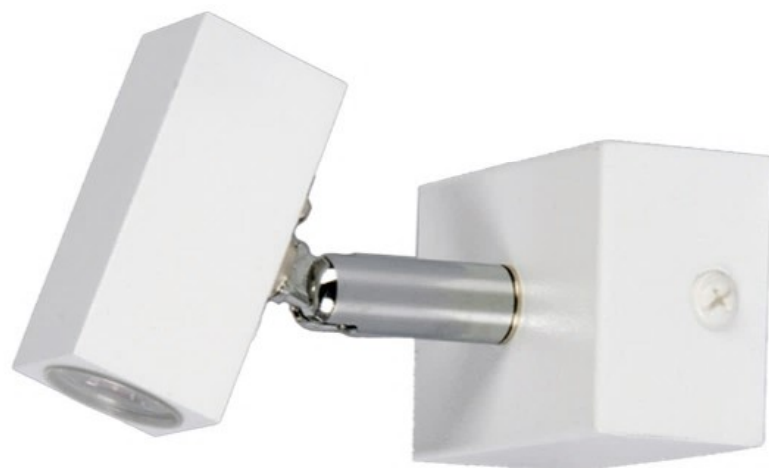




Model No: WL 241 (Round)
Light Source: LED (EDISON)
Power: 3W
Driver: Philips
Finish: Wood
Size: 65mm x 75mm
Material: Aluminium & Metal
Colour Temperature: 3000K/ 4000K/ 6000K



Model No: WL 241- 2 (Square)
Light Source: LED (EDISON)
Power: 6W
Driver: Osram
Finish: Wood
Size: 280mm x 55mm
Material: Aluminium & Metal
Colour Temperature: 3000K/ 4000K/ 6000K



Model No: WL 241 (Square)
Light Source: LED (EDISON)
Power: 3W
Driver: Philips
Finish: White
Size: 65mm x 55mm
Material: Aluminium & Metal
Colour Temperature: 3000K/ 4000K/ 6000K



Model No: WL 241 (Square)
Light Source: LED (EDISON)
Power: 3W
Driver: Philips
Finish: Wood
Size: 40mm x 225mm
Material: Aluminium & Metal
Colour Temperature: 3000K/ 4000K/ 6000K



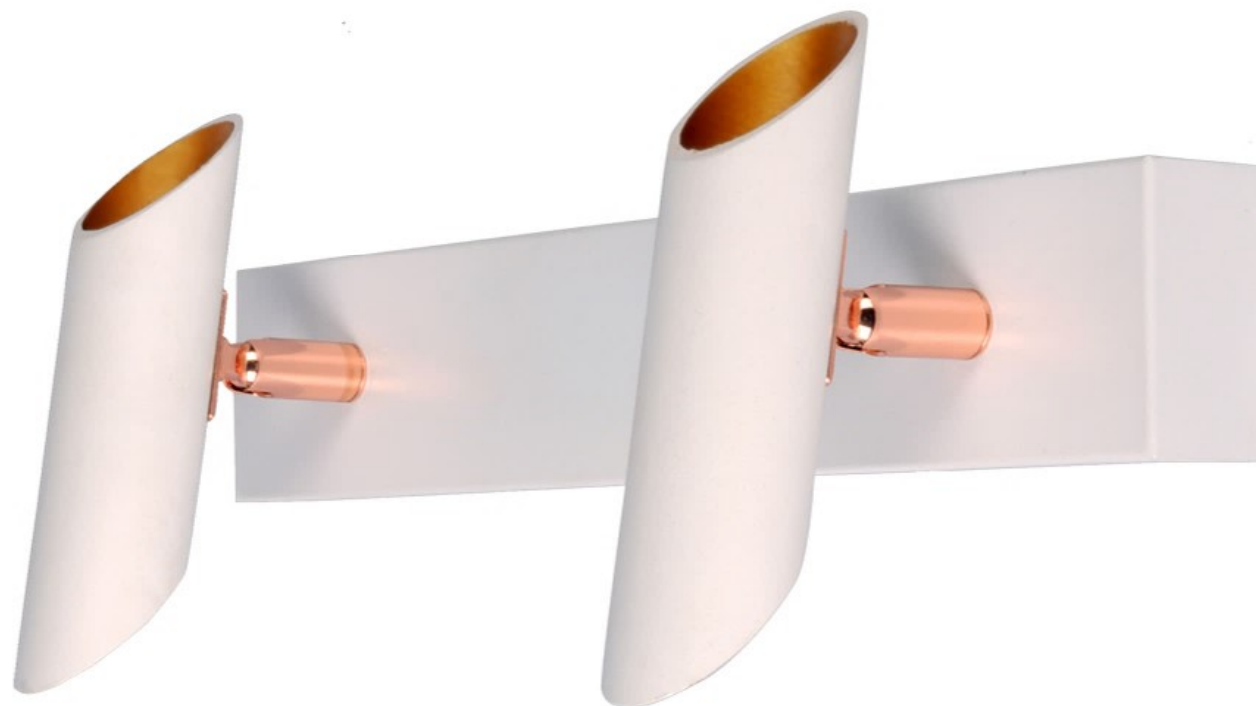
Model No: WL 241- 3 (Square)
Light Source: LED (EDISON)
Power: 9W
Driver: Philips
Finish: Wood
Size: 450mm x 55mm
Material: Aluminium & Metal
Colour Temperature: 3000K/ 4000K/ 6000K



Model No: WL 625
Light Source: LED (CREE)
Power: 6W
Driver: Philips
Finish: Black
Size: 40mm x 90mm
Material: Aluminium & Metal
Colour Temperature: 3000K/ 4000K/ 6000K



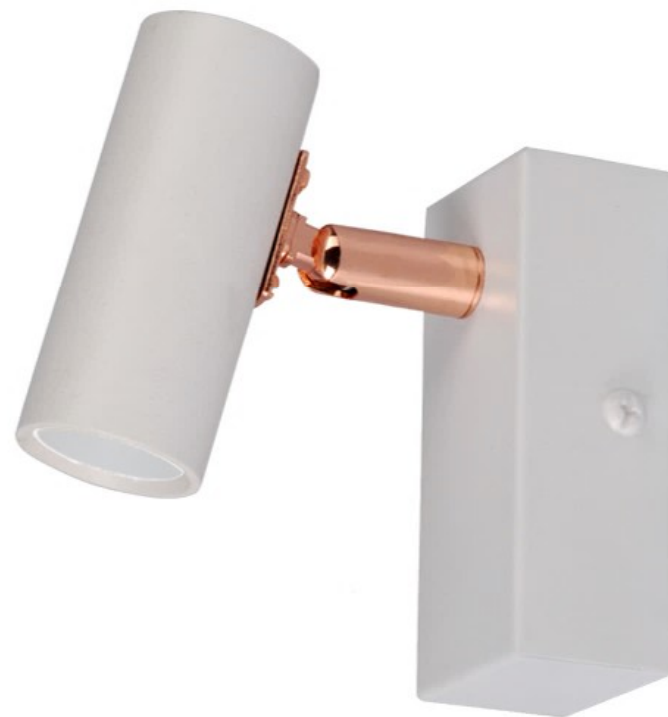
Model No: WL 620- 2
Light Source: LED (CREE)
Power: 10W
Driver: Philips
Finish: Black
Size: 280mm x 125mm
Material: Aluminium & Metal
Colour Temperature: 3000K/ 4000K/ 6000K



Model No: WL 620- 2
Light Source: LED (CREE)
Power: 10W
Driver: Philips
Finish: White
Size: 280mm x 125mm
Material: Aluminium & Metal
Colour Temperature: 3000K/ 4000K/ 6000K



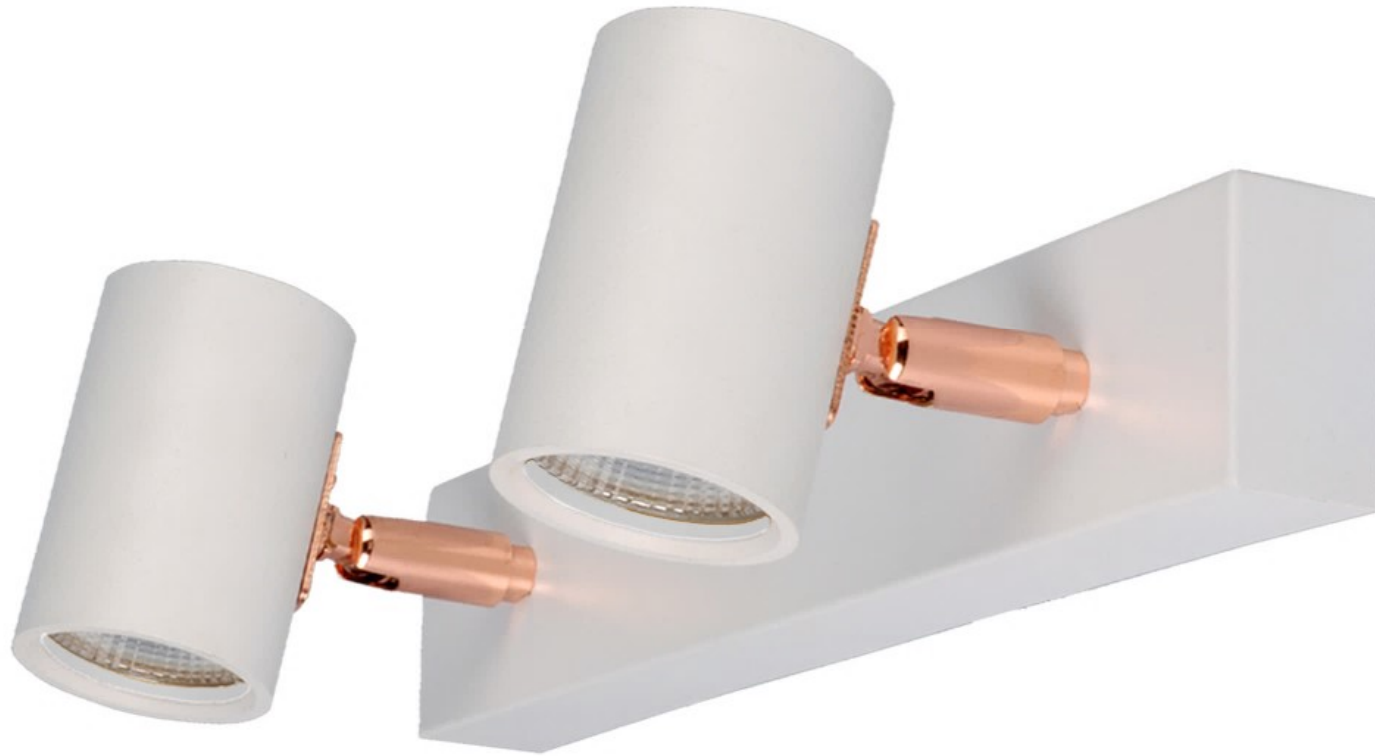
Model No: WL 625
Light Source: LED (CREE)
Power: 6W
Driver: Philips
Finish: Black
Size: 40mm x 90mm
Material: Aluminium & Metal
Colour Temperature: 3000K/ 4000K/ 6000K



Model No: WL 625
Light Source: LED (CREE)
Power: 6W
Driver: Philips
Finish: White
Size: 40mm x 90mm
Material: Aluminium
Colour Temperature: 3000K/ 4000K/ 6000K



Model No: WL 650- 2
Light Source: LED (CREE)
Power: 12W
Driver: Philips
Finish: Black
Size: 280mm x 75mm
Material: Aluminium & Metal
Colour Temperature: 3000K/ 4000K/ 6000K



Model No: WL 650- 2
Light Source: LED (CREE)
Power: 12W
Driver: Philips
Finish: White
Size: 280mm x 75mm
Material: Aluminium & Metal
Colour Temperture: 3000K/ 4000K/ 6000K



Model No: WL 675
Light Source: LED (CREE)
Power: 6W
Driver: Philips
Finish: Black
Size: 40mm x 100mm
Material: Aluminium & Metal
Colour Temperature: 3000K/ 4000K/ 6000K



Model No: WL 675
Light Source: LED (CREE)
Power: 6W
Driver: Philips
Finish: White
Size: 40mm x 100mm
Material: Aluminium & Metal
Colour Temperature: 3000K/ 4000K/ 6000K



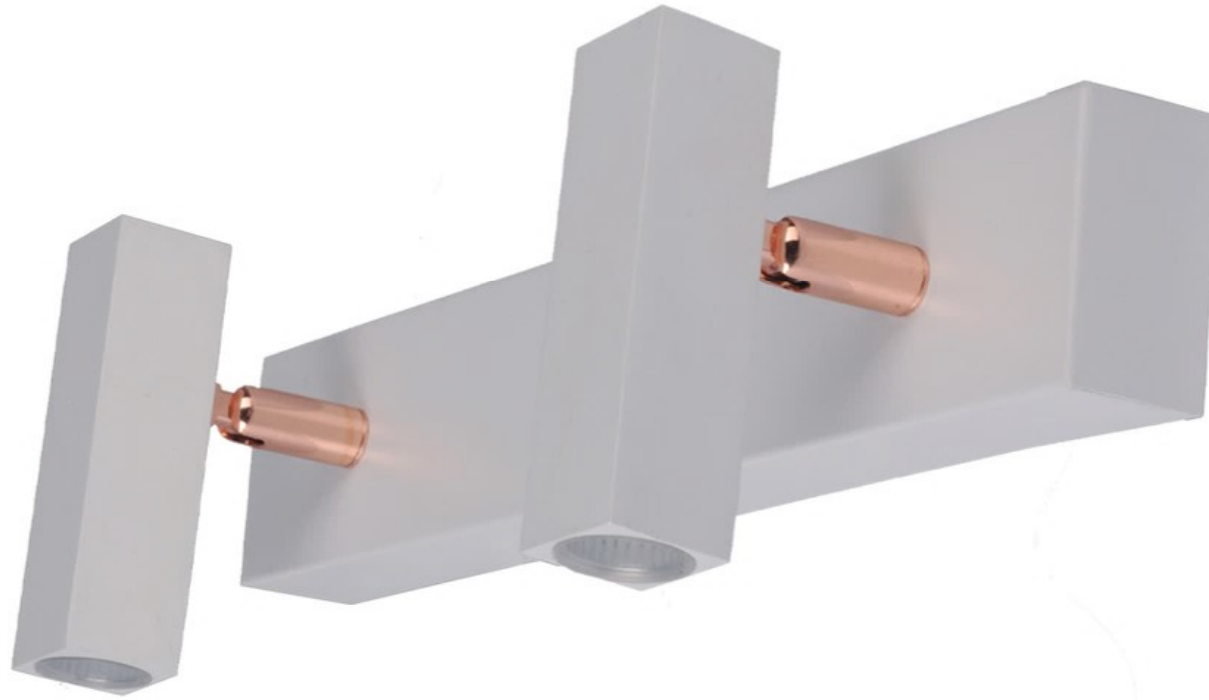
Model No: WL 680
Light Source: LED (CREE)
Power: 6W
Driver: Philips
Finish: Black
Size: 40mm x 100mm
Material: Aluminium & Metal
Colour Temperature: 3000K/ 4000K/ 6000K



Model No: WL 680
Light Source: LED (CREE)
Power: 6W
Driver: Philips
Finish: White
Size: 40mm x 100mm
Material: Aluminium & Metal
Colour Temperature: 3000K/ 4000K/ 6000K



Model No: WL 680- 2
Light Source: LED (CREE)
Power: 10W
Driver: Philips
Finish: Black
Size: 280mm x 90mm
Material: Aluminium & Metal
Colour Temperature: 3000K/ 4000K/ 6000K



Model No: WL 680- 2
Light Source: LED (CREE)
Power: 10W
Driver: Philips
Finish: White
Size: 280mm x 90mm
Material: Aluminium & Metal
Colour Temperature: 3000K/ 4000K/ 6000K



Model No: WL 510
Light Source: LED (SEOUL)
Power: 15W / 20W / 30W / 45W
Driver: Powermate
Finish: Wood
Size: 300mm / 400mm / 600mm / 900mm
Material: Aluminium, Metal & Acrylic
Colour Temperature: 3000K / 4000K / 6000K



Model No: WL 242
Light Source: LED (EDISON)
Power: 3W
Driver: Philips
Finish: Black
Size: 50mm x 425mm
Material: Aluminium, Acrylic & Metal
Colour Temperature: 3000K/ 4000K/ 6000K



Model No: WL 242
Light Source: LED (EDISON)
Power: 3W
Driver: Philips
Finish: SS
Size: 50mm x 425mm
Material: Aluminium, Acrylic & Metal
Colour Temperature: 3000K/ 4000K/ 6000K



Model No: WL 242
Light Source: LED (EDISON)
Power: 3W
Driver: Philips
Finish: White
Size: 50mm x 425mm
Material: Aluminium, Acrylic & Metal
Colour Temperature: 3000K/ 4000K/ 6000K



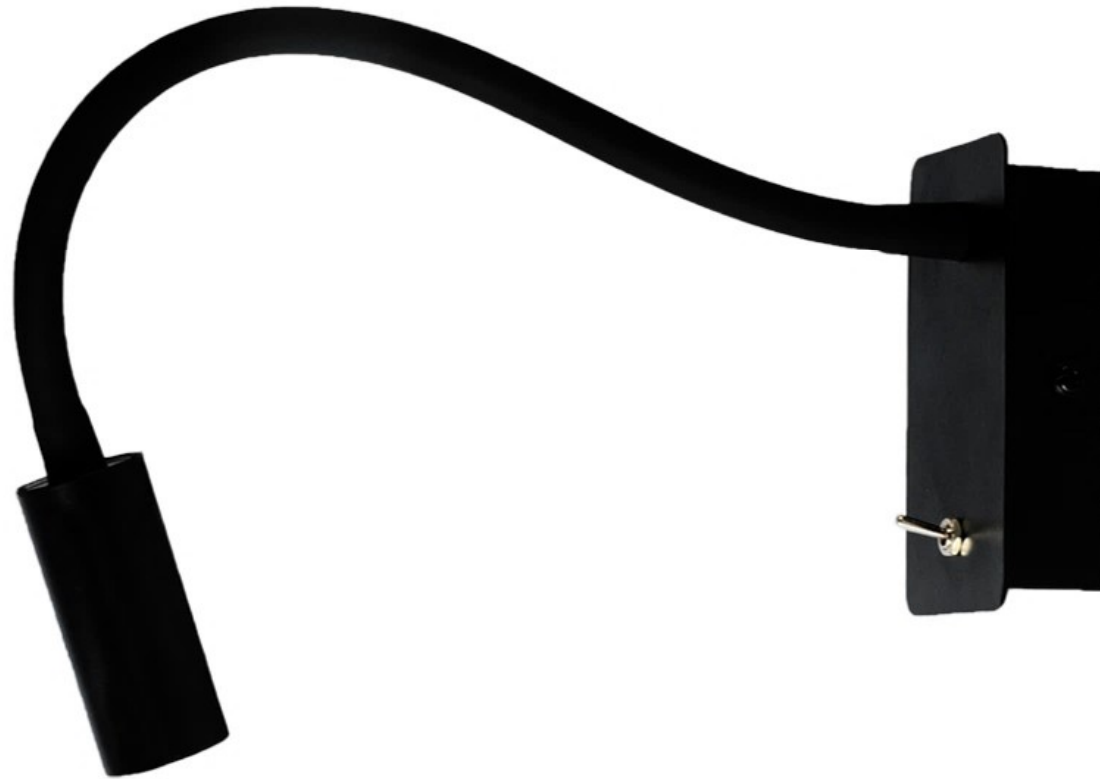
Model No: WL 525
Light Source: LED (EDISON)
Power: 3W
Driver: Philips
Finish: Black
Size: 40mm x 400mm
Material: Aluminium & Metal
Colour Temperature: 3000K/ 4000K/ 6000K



Model No: WL 525
Light Source: LED (EDISON)
Power: 3W
Driver: Philips
Finish: SS
Size: 50mm x 425mm
Material: Aluminium & Metal
Colour Temperature: 3000K/ 4000K/ 6000K



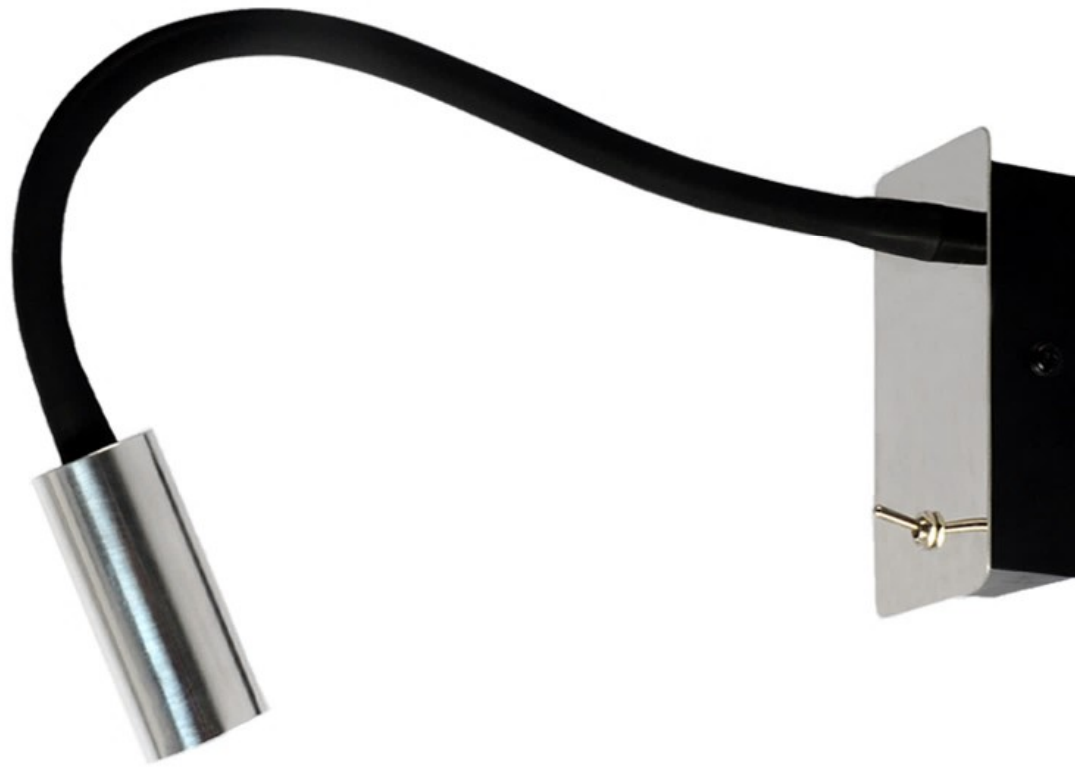
Model No: WL 525
Light Source: LED (EDISON)
Power: 3W
Driver: Philips
Finish: White
Size: 50mm x 425mm
Material: Aluminium & Metal
Colour Temperature: 3000K/ 4000K/ 6000K



Model No: WL 555
Light Source: LED (EDISON)
Power: 3W
Driver: Philips
Finish: Black
Size: 50mm x 365mm
Material: Aluminium & Metal
Colour Temperature: 3000K/ 4000K/ 6000K



Model No: WL 555
Light Source: LED (EDISON)
Power: 3W
Driver: Philips
Finish: Brass Antique
Size: 50mm x 365mm
Material: Aluminium & Metal
Colour Temperature: 3000K/ 4000K/ 6000K



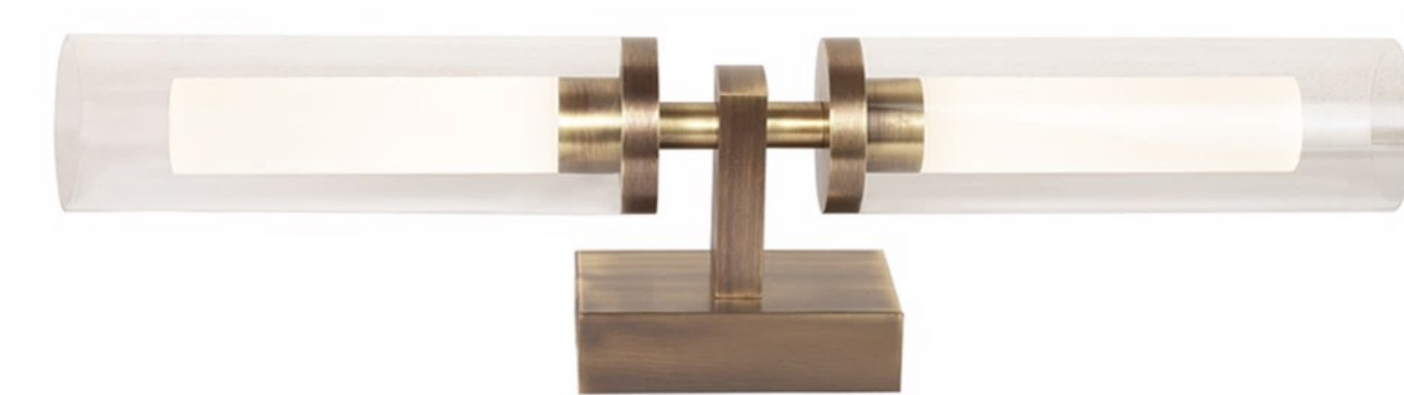
Model No: WL 555
Light Source: LED (EDISON)
Power: 3W
Driver: Philips
Finish: Chrome
Size: 50mm x 365mm
Material: Aluminium & Metal
Colour Temperature: 3000K/ 4000K/ 6000K



Model No: WL 555
Light Source: LED (EDISON)
Power: 3W
Driver: Philips
Finish: Copper Antique
Size: 50mm x 365mm
Material: Aluminium & Metal
Colour Temperature: 3000K/ 4000K/ 6000K



Model No: WL 555
Light Source: LED (EDISON)
Power: 3W
Driver: Philips
Finish: White
Size: 50mm x 365mm
Material: Aluminium & Metal
Colour Temperature: 3000K/ 4000K/ 6000K



Model No: WL AQUA- 2 (Small)
Light Source: LED (CREE)
Power: 12W
Driver: Philips
Finish: Copper Antique
Size: 350mm x 60mm/ 450mm x 60mm
Material: Aluminium, Metal & Acrylic
Colour Temperature: 3000K/ 4000K/ 6000K



Model No: WL AQUA- 2 (Small)
Light Source: LED (CREE)
Power: 12W
Driver: Philips
Finish: Copper Antique
Size: 350mm x 60mm/ 450mm x 60mm
Material: Aluminium, Metal & Acrylic
Colour Temperature: 3000K/ 4000K/ 6000K



Model No: WL 777
Light Source: LED (CREE)
Power: 6W
Driver: Philips
Finish: Black- Gold
Size: 100mm x 75mm
Material: Aluminium & Metal
Colour Temperature: 3000K/ 4000K/ 6000K



Model No: WL 777
Light Source: LED (CREE)
Power: 6W
Driver: Philips
Finish: White- Foil Gold
Size: 100mm x 75mm
Material: Aluminium & Metal
Colour Temperature: 3000K/ 4000K/ 6000K



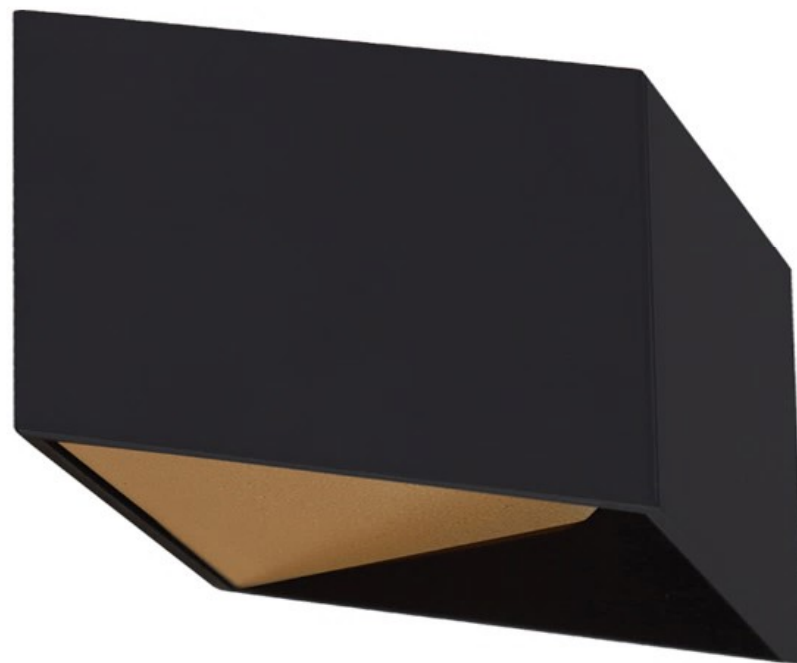
Model No: WL 777
Light Source: LED (CREE)
Power: 6W
Driver: Philips
Finish: White- Gold
Size: 100mm x 75mm
Material: Aluminium & Metal
Colour Temperature: 3000K/ 4000K/ 6000K



Model No: WL 777
Light Source: LED (CREE)
Power: 6W
Driver: Philips
Finish: White- White
Size: 100mm x 75mm
Material: Aluminium & Metal
Colour Temperature: 3000K/ 4000K/ 6000K



Model No: WL 777
Light Source: LED (CREE)
Power: 6W
Driver: Philips
Finish: Wood- Gold
Size: 100mm x 75mm
Material: Aluminium & Metal
Colour Temperature: 3000K/ 4000K/ 6000K



Model No: WL 787
Light Source: LED (CREE)
Power: 6W
Driver: Philips
Finish: Black- Gold
Size: 100mm x 60mm
Material: Aluminium & Metal
Colour Temperature: 3000K/ 4000K/ 6000K



Model No: WL 787
Light Source: LED (CREE)
Power: 6W
Driver: Philips
Finish: White- Foil Gold
Size: 100mm x 60mm
Material: Aluminium & Metal
Colour Temperature: 3000K/ 4000K/ 6000K



Model No: WL 787
Light Source: LED (CREE)
Power: 6W
Driver: Philips
Finish: White- Gold
Size: 100mm x 60mm
Material: Aluminium & Metal
Colour Temperature: 3000K/ 4000K/ 6000K



Model No: WL 787
Light Source: LED (CREE)
Power: 6W
Driver: Philips
Finish: White- White
Size: 100mm x 225mm
Material: Aluminium & Metal
Colour Temperature: 3000K/ 4000K/ 6000K



Model No: WL 805 (Big)
Light Source: LED (CREE)
Power: 10W
Driver: Philips
Finish: Black
Size: 100mm x 200mm
Material: Aluminium
Colour Temperature: 3000K/ 4000K/ 6000K



Model No: WL 805 (Small)
Light Source: LED (CREE)
Power: 6W
Driver: Philips
Finish: Black
Size: 100mm x 110mm
Material: Aluminium
Colour Temperature: 3000K/ 4000K/ 6000K



Model No: WL 1020
Light Source: LED
Power: 10W
Driver: Philips
Finish: White
Size: 100mm x 270mm
Material: Aluminium & Acrylic
Colour Temperature: 3000K/ 4000K/ 6000K



Model No: WL 1020
Light Source: LED
Power: 10W
Driver: Philips
Finish: Wood
Size: 100mm x 270mm
Material: Aluminium & Acrylic
Colour Temperature: 3000K/ 4000K/ 6000K



Model No: WL IMPERIAL
Light Source: LED (CREE)
Power: 6W
Driver: Philips
Finish: Copper Rustic
Size: 175mm x 140mm
Material: Metal
Colour Temperature: 3000K/ 4000K/ 6000K



Model No: WL IMPERIAL
Light Source: LED (CREE)
Power: 6W
Driver: Philips
Finish: Iron Rustic
Size: 175mm x 140mm
Material: Metal
Colour Temperature: 3000K/ 4000K/ 6000K



Model No: WL IMPERIAL
Light Source: LED (CREE)
Power: 6W
Driver: Philips
Finish: Silver Rustic
Size: 175mm x 140mm
Material: Metal
Colour Temperature: 3000K/ 4000K/ 6000K



Model No: WL INTERIO
Light Source: HOLDER (E-27)
Finish: Black
Size: 125mm x 350mm
Material: Aluminium & Metal



Model No: WL INTERIO
Light Source: HOLDER (E-27)
Finish: White
Size: 125mm x 350mm
Material: Aluminium & Metal



Model No: WL INTERIO- 2
Light Source: HOLDER (E-27 x 2)
Finish: Black
Size: 320mm x 350mm
Material: Aluminium & Metal



Model No: WL INTERIO- 2
Light Source: HOLDER (E-27 x 2)
Finish: White
Size: 320mm x 350mm
Material: Aluminium & Metal



Model No: WL TRIDENT
Light Source: LED (EDISON)
Power: 15W
Driver: Fulham
Finish: Matt Copper
Size: 120mm x 460mm
Material: Metal & Acrylic
Colour Temperature: 3000K/ 4000K/ 6000K



Model No: WL TRIDENT
Light Source: LED (EDISON)
Power: 15W
Driver: Fulham
Finish: Metallic Gold
Size: 120mm x 460mm
Material: Metal & Acrylic
Colour Temperature: 3000K/ 4000K/ 6000K



Model No: WL PIXEL
Light Source: HOLDER (GU- 10)
Finish: Black
Size: 100mm x 125mm
Material: Aluminium & Metal



Model No: WL GLOBE MAXX
Light Source: LED (OSRAM)
Power: 4W
Driver: Philips
Finish: Matt Copper
Size: 100mm x 260mm
Material: Metal & Glass
Colour Temperature: 3000K



Model No: WL GLOBE MAXX
Light Source: LED (OSRAM)
Power: 4W
Driver: Philips
Finish: Matt Gold
Size: 100mm x 260mm
Material: Metal & Glass
Colour Temperature: 3000K



Model No: WL ORBIT
Light Source: LED (OSRAM)
Power: 4W
Driver: Philips
Finish: Brass Antique
Size: 90mm x 220mm
Material: Metal & Glass
Colour Temperature: 3000K



Model No: WL ORBIT
Light Source: LED (OSRAM)
Power: 4W
Driver: Philips
Finish: Copper Antique
Size: 90mm x 220mm
Material: Metal & Glass
Colour Temperature: 3000K



Model No: WL ORBIT R
Light Source: LED (OSRAM)
Power: 3W & 4W
Driver: Philips
Finish: Brass Antique
Size: 90mm x 220mm
Material: Metal & Glass
Colour Temperature: 3000K



Model No: WL 0234
Light Source: Holder (E- 27)
Finish: Black
Size: 80mm x 125mm
Material: Metal



Model No: WL 0234
Light Source: Holder (E- 27)
Finish: Chrome
Size: 80mm x 125mm
Material: Metal



Model No: WL 0234
Light Source: Holder (E- 27)
Finish: Copper
Size: 80mm x 125mm
Material: Metal



Model No: WL 055
Light Source: HOLDER (E- 27)
Finish: Golden Rustic
Fabric: Black Raw Silk
Size: 150mm x 200mm
Material: Metal & Fabric



Model No: WL 055
Light Source: HOLDER (E- 27)
Finish: Golden Rustic
Fabric: Cream Raw Silk
Size: 150mm x 200mm
Material: Metal & Fabric



Model No: WL 071R
Light Source: LED & HOLDER (E- 14)
Power: 3W
Driver: Philips
Finish: SS
Fabric: Offwhite Cotton
Size: 145mm x 250mm
Material: Aluminium, Metal & Fabric
Colour Temperature: 3000K/ 4000K/ 6000K



Model No: WL 075
Light Source: E-27
Finish: Brass Antique
Size: 150mm x 280mm
Material: Metal & Fabric



Model No: WL 075
Light Source: E-27
Finish: Copper Antique
Size: 150mm x 280mm
Material: Metal & Fabric



Model No: WL 075 R
Light Source: E-27 & LED
Power: 3W
Driver: Eaglerise
Finish: Brass Antique
Size: 150mm x 280mm
Material: Metal & Fabric
Colour Temperature: 3000K/ 4000K/ 6000K



Model No: WL 075 R
Light Source: E-27 & LED
Power: 3W
Driver: Eaglerise
Finish: Copper Antique
Size: 150mm x 280mm
Material: Metal & Fabric
Colour Temperature: 3000K/ 4000K/ 6000K



Model No.: WL 909
Light Source: LED (CREE)
Power: 3W
Driver: Indian
Finish: Matt Gold
Size: 60MM X 125MM
Material: Aluminium & Metal
Colour Temperature: 3000K/ 4000K/ 6000K



Model No.: WL 919
Light Source: LED (CREE)
Power: 3W
Driver: Indian
Finish: Matt Copper
Size: 50MM X 125MM
Material: Aluminium & Metal
Colour Temperature: 3000K/ 4000K/ 6000K



Model No.: WL 929
Light Source: LED (CREE)
Power: 3W
Driver: Indian
Finish: Matt Gold
Size: DIA 95 MM X HEIGHT 120 MM
Material: Aluminium & Metal
Colour Temperature: 3000K/ 4000K/ 6000K



Model No.: WL 929
Light Source: LED (CREE)
Power: 3W
Driver: Indian
Finish: Matt Copper
Size: DIA 95MM X HEIGHT 120MM
Material: Aluminium & Metal
Colour Temperature: 3000K/ 4000K/ 6000K



Model No.: WL BELLA
Light Source: LED (CREE)
Power: 6W
Driver: Philips
Finish: Wood
Size: DIA 100MM X HEIGHT 75MM
Material: Aluminium
Colour Temperature: 3000K/ 4000K/ 6000K



Model No.: WL STICK
Light Source: Seoul
Power: 8W / 12W
Driver: Indian
Finish: Black
Size: 400MM / 600MM
Material: Aluminium
Colour Temperature: 3000K/4000k/6000K



Model No.: WL STICK
Light Source: Seoul
Power: 12W/ 15W
Driver: Indian
Finish: Black
Size: 600MM/ 900MM
Material: Aluminium
Colour Temperature: 3000K/4000k/6000K